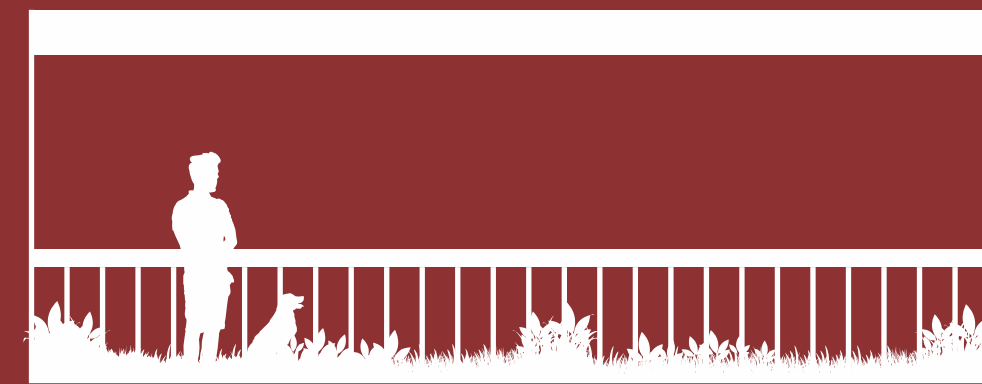


A Project By  
**SIDDHARTH**  
ACHIEVING EXCELLENCE



BECAUSE YOUR  
**BALCONY SAYS**  
**IT ALL**

---

---



UNVAIL

*your story*

WITH A VIEW

BECAUSE YOUR  
BALCONY SAYS  
IT ALL

A Project By  
**SIDDHARTH**  
ACHIEVING EXCELLENCE

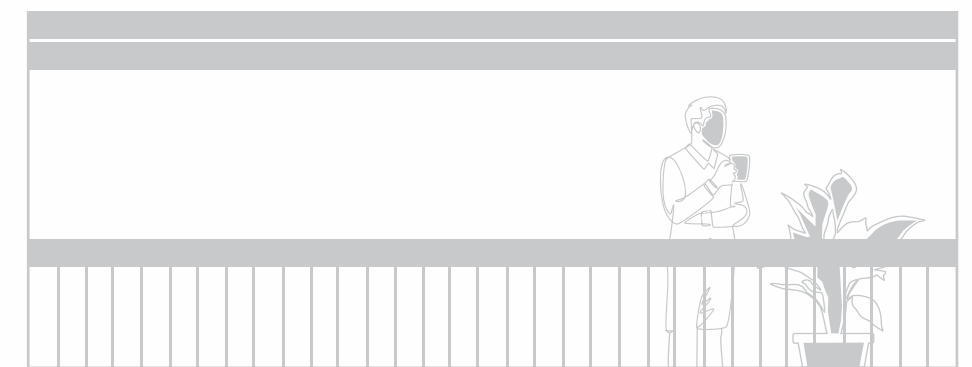
SIDDHARTH  
**GREENZ**  
3 & 4 BHK HOMES



serene green  
vistas



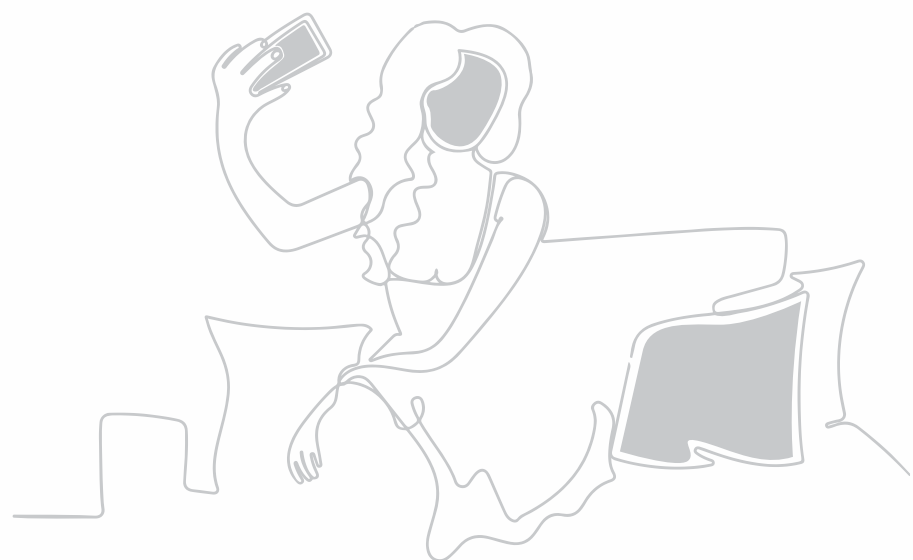
garden  
view balcony  
for a life time





contemporary  
design

gazebo  
for a picture  
perfect memories

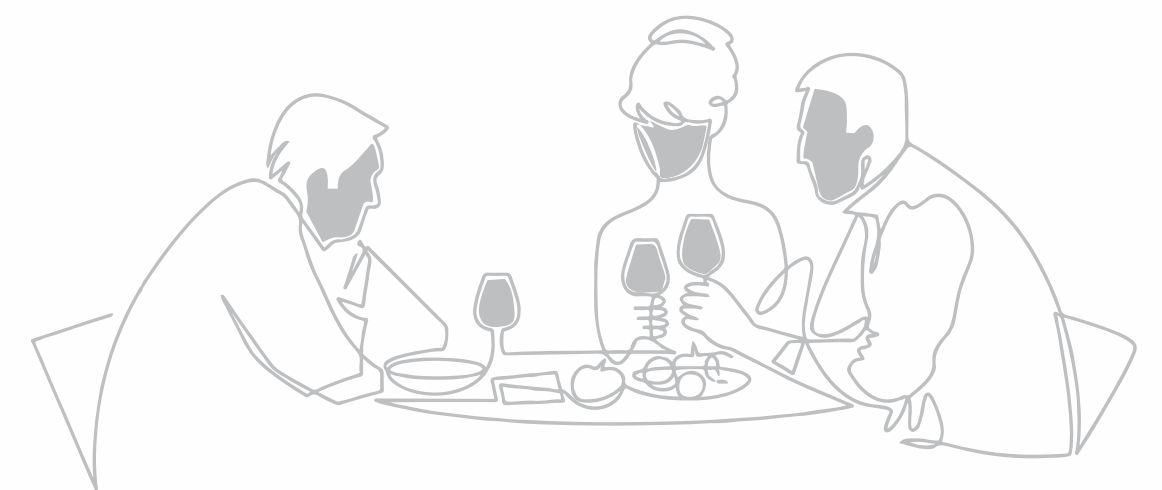




laugh, imagine,  
soar



banquet hall  
for a lifelong  
celebration

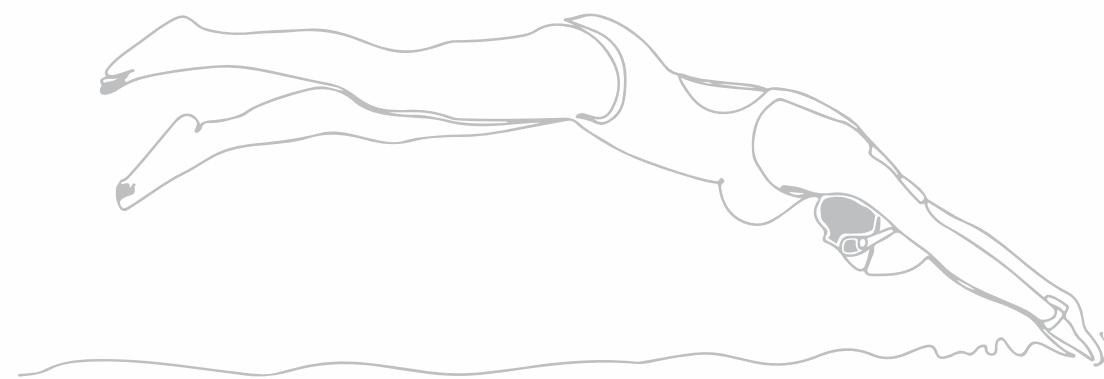






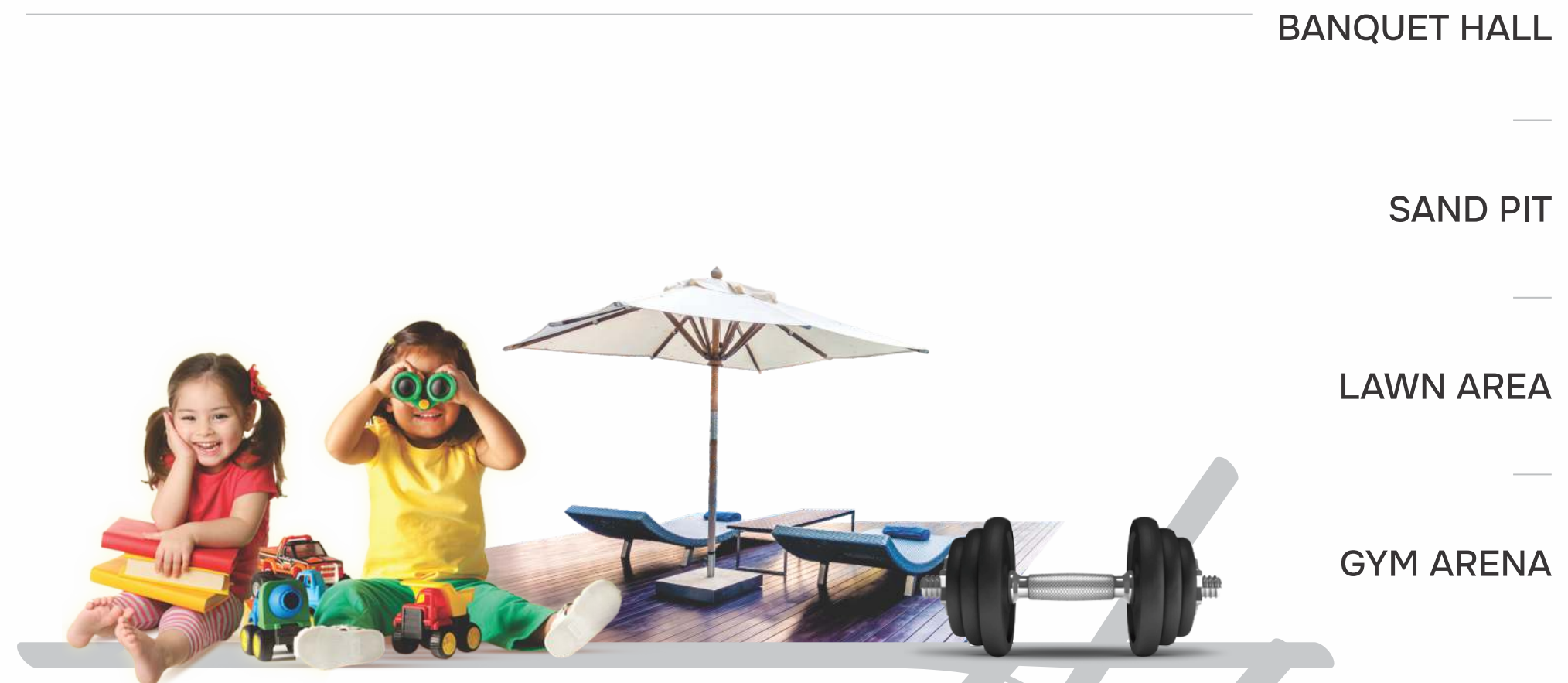
cozy corners,  
endless fun

swimming pool  
for a physical  
health





strength and  
determination



BANQUET HALL

SAND PIT

LAWN AREA

GYM ARENA

# amenities

FOR LIFE LONG MEMORIES

SWIMMING POOL

AMUSEMENT ARCADE

INDOOR GAMES

SIDDHARTH  
**GREENZ**  
3 & 4 BHK HOMES

# GROUND FLOOR



## LEGEND

- |                         |                          |
|-------------------------|--------------------------|
| 1. ENTRY                | 10. LAWN                 |
| 2. PLANTATION/SHRUBBEDA | 11. FEATURE WALL         |
| 3. SCULPTURE            | 12. PERGOLA              |
| 4. STEPPED PLANTATION   | 13. PORTALS              |
| 5. WATER BODY           | 14. SEATINGS             |
| 6. GAZEBO               | 15. SEATING WITH PLANTER |
| 7. LOOSE SEATING        | 16. LOOSE POTS           |
| 8. TURF                 | 17. KIDS PLAY AREA       |
| 9. STEPPED SEATING      | 18. SANDPIT              |

# 1<sup>ST</sup> & 2<sup>ND</sup> FLOOR

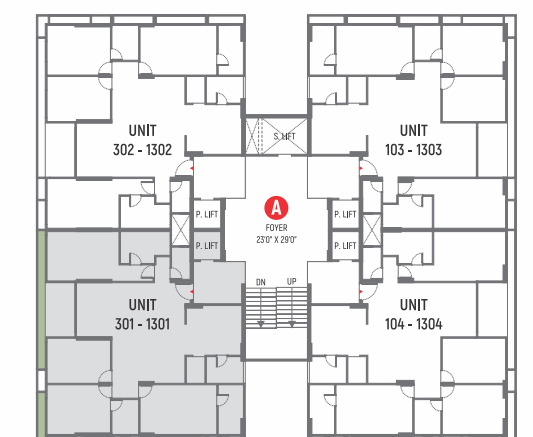


# TYPICAL FLOOR

(3<sup>rd</sup> to 13<sup>th</sup> Floor)

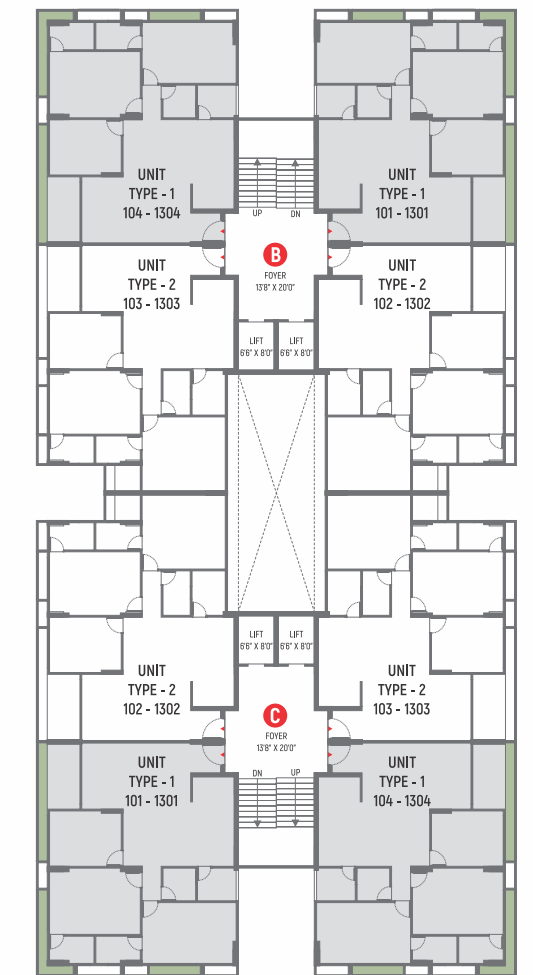


A

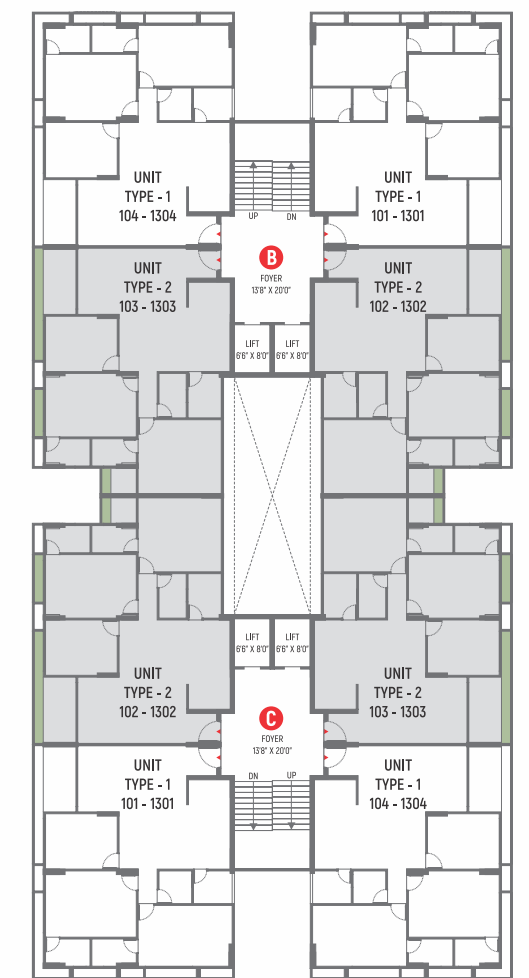


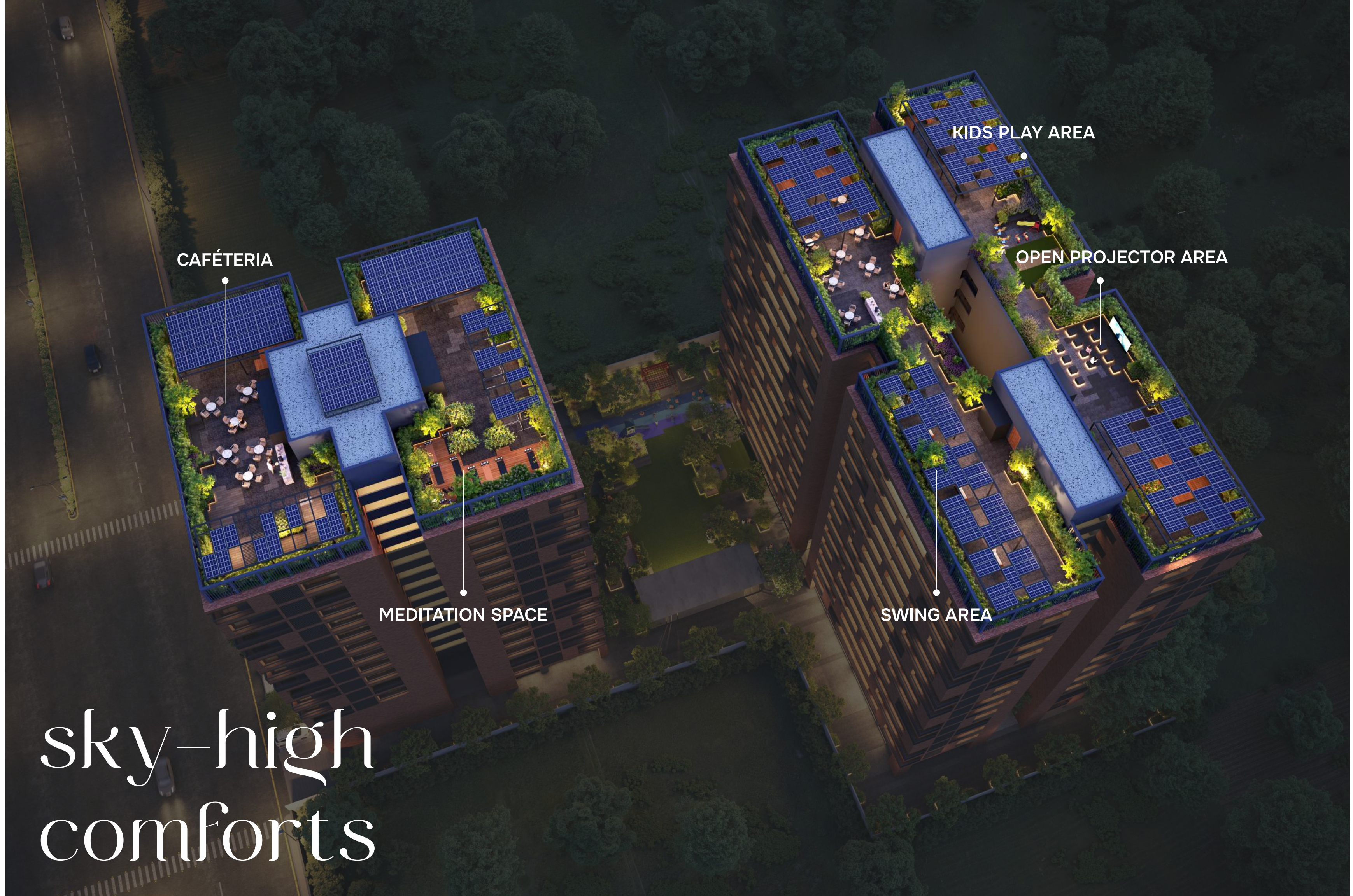


**B-C**  
**TYPE - 1**



**B-C**  
TYPE - 2





CAFÉTERIA

KIDS PLAY AREA

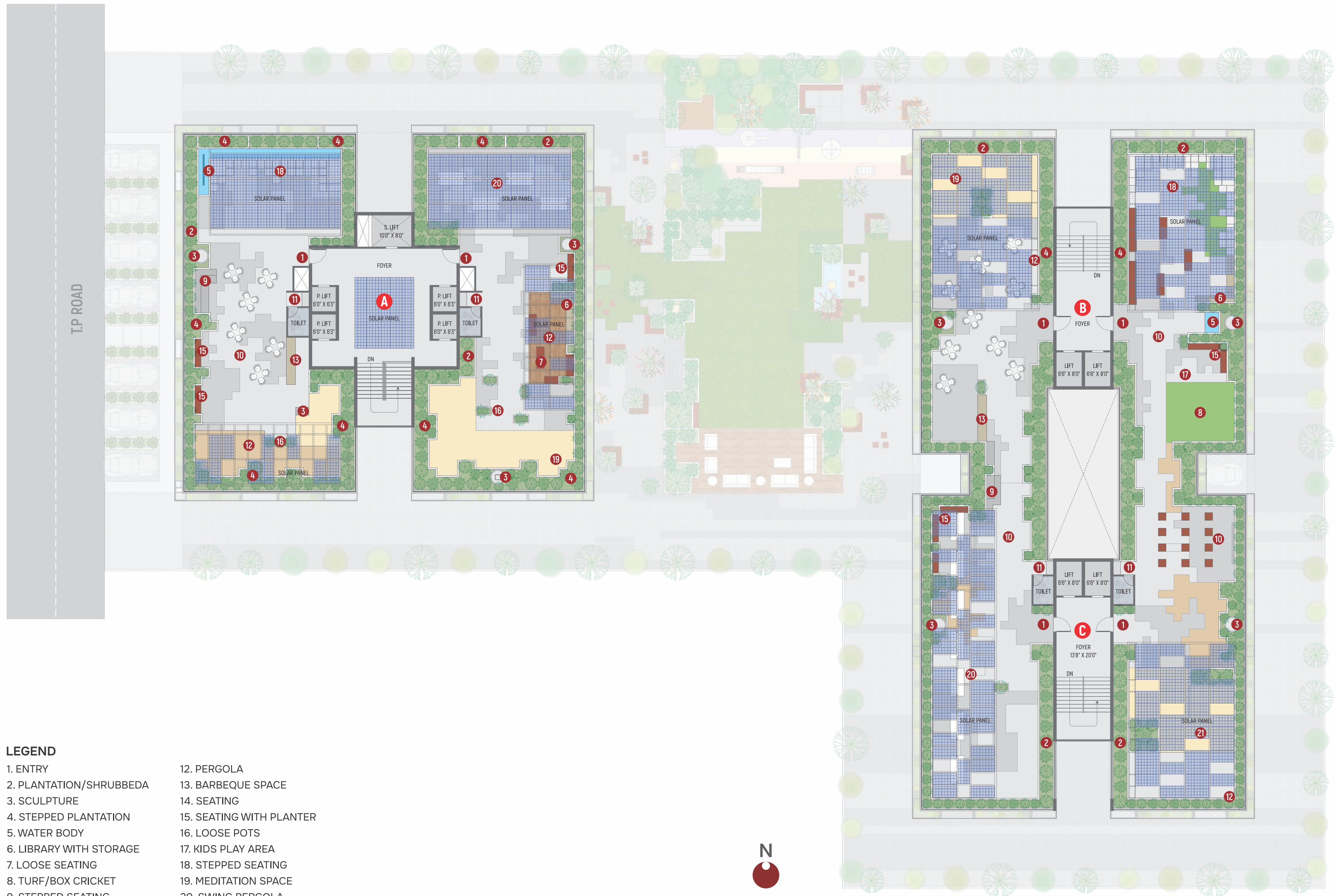
OPEN PROJECTOR AREA

MEDITATION SPACE

SWING AREA

sky-high  
comforts

# TERRACE FLOOR



## LEGEND

- |                         |                          |
|-------------------------|--------------------------|
| 1. ENTRY                | 12. PERGOLA              |
| 2. PLANTATION/SHRUBBEDA | 13. BARBEQUE SPACE       |
| 3. SCULPTURE            | 14. SEATING              |
| 4. STEPPED PLANTATION   | 15. SEATING WITH PLANTER |
| 5. WATER BODY           | 16. LOOSE POTS           |
| 6. LIBRARY WITH STORAGE | 17. KIDS PLAY AREA       |
| 7. LOOSE SEATING        | 18. STEPPED SEATING      |
| 8. TURF/BOX CRICKET     | 19. MEDITATION SPACE     |
| 9. STEPPED SEATING      | 20. SWING PERGOLA        |
| 10. OPEN PROJECTOR AREA | 21. DECK                 |
| 11. WET SPACE/WASH AREA |                          |



swing into  
relaxation

## SPECIFICATIONS



SIDDHARTH  
GREENZ

### RCC

- Earthquake resistant structure as per seismic design.

### FINISHES

- Internal wall smooth plaster with two coats of white putty.
- External wall double coat plaster with texture finish & acrylic paint.

### PLUMBING

- Concealed plumbing with high quality CPVC and UPVC pipes.
- Jaquar or equivalent range single lever chrome plated finish.
- Arrangement for washing machine and dishwasher in dry balcony.
- Suspended plumbing for easy maintenance.

### KITCHEN

- Glazed/Ceramic tiles dado.
- Gas leak detector system.
- Kitchen with granite top.
- S.S sink with drain board.

### BATHROOMS

- Separate wet and dry areas with glass partition.
- Designer tiles up to lintel level. Concealed plumbing with premium quality sanitary fittings.
- Mirror for all bathrooms and Exhaust fan provision.

### TOILETS

- Wall hung premium EWC.
- Soft closing lid for EWC.
- Decorative premium tiles.
- Concealed flush valves.
- Counter wash basin in attached toilet.

### DOORS/WINDOWS

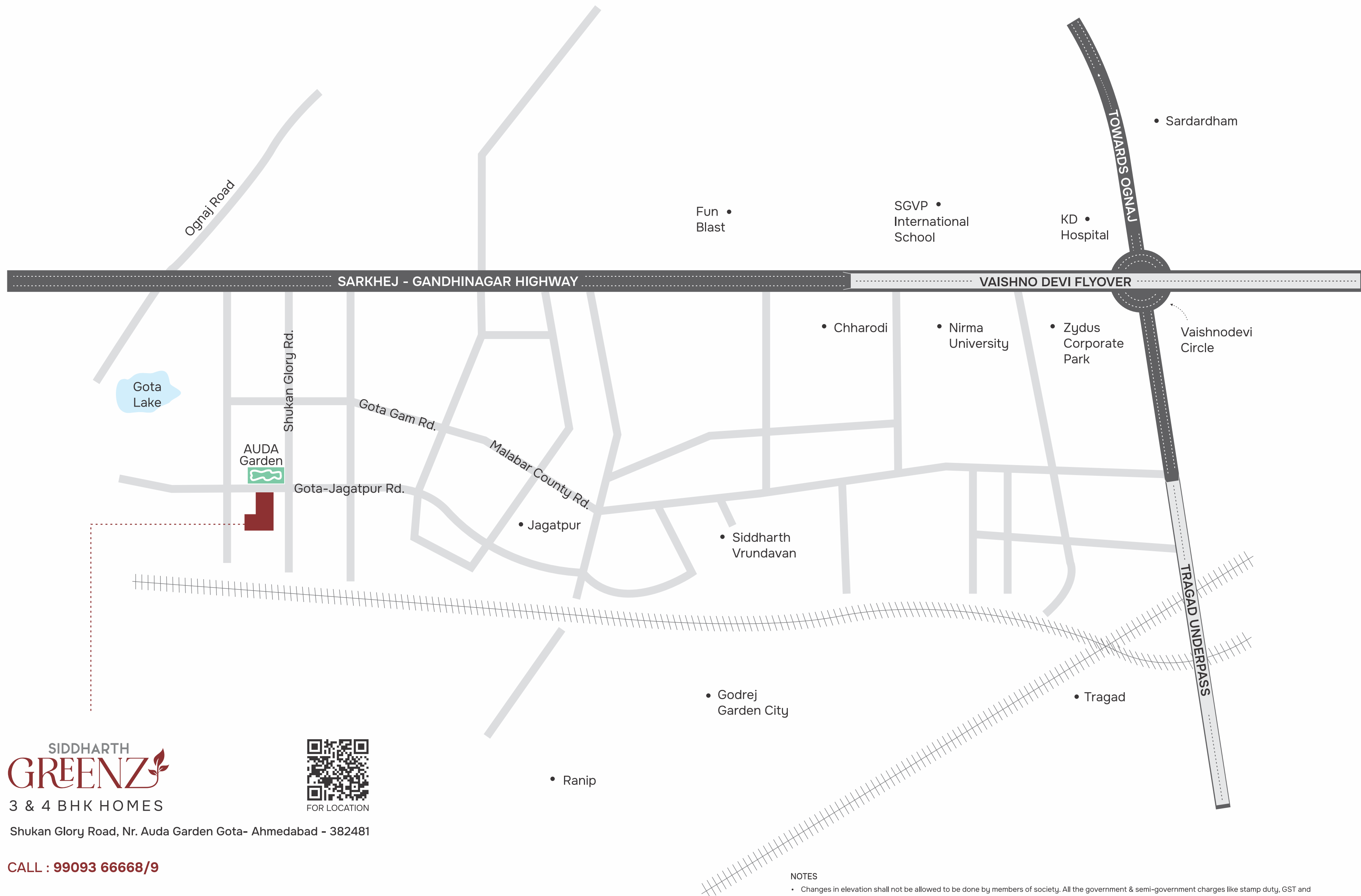
- Decorative veneer finish main door with exclusive fittings.
- Internal flush doors with premium fixtures.
- Domal section or Double glazed UPVC window or equivalent.

### FLOORING

- Premium quality of large size tiles in all rooms.
- Anti-skid tiles in bathrooms.

### ELECTRIFICATION

- Concealed copper wiring with circuit breakers.
- Cable and telephone points in living and all bedrooms and Adequate electrical points along with premium quality modular switches.
- Points for hob, chimney, dish washer, washing machine, fridge and purifier.
- Shuttered plug socket to avoid accidental contact. Provision for inverter backup.
- Premium quality modular switches.
- Split A/C provision in all rooms.
- 3-phase connection for all flats and 2-way Switches in bedrooms with attached toilets.
- Footlight in bedroom with attached toilets.
- Wi-Fi provision in each flat.
- Earth leakage circuit breakers.



**SIDDHARTH GREENZ**  
 3 & 4 BHK HOMES

Shukan Glory Road, Nr. Auda Garden Gota- Ahmedabad - 382481

**CALL : 99093 66668/9**

**DEVELOPER** Siddharth Greenz Developers | **ARCHITECT** 9<sup>th</sup> Street Architect | **STRUCTURAL ENGINEER** AMU Consulting Engineers



FOR LOCATION

PR/GJ/AHMEDABAD/AHMEDABAD CITY/Ahmedabad Municipal Corporation/MAA13252/050424/280229 | gujrerar1.gujarat.gov.in

**NOTES**

- Changes in elevation shall not be allowed to be done by members of society. All the government & semi-government charges like stamp duty, GST and any other tax by state or central government shall be borne by members. Legal documentation charges and Advance maintenance shall be borne by the members separately.
- All the rights reserved by a developer to make any changes in the layout plan, exterior elevation, dimension and other details there is to comply with statutory regulation shall be binding to all the members. Any additional liabilities due to changes in the by laws shall be borne by members. This brochure is just for an easy presentation of the project and should not be treated as a legal document. Subject to Ahmedabad jurisdiction.